

DRY CELL BATTERY RECYCLE KIT INSTRUCTIONS (Continued)

Wear safety glasses and gloves when handling material for recycle

Step 1 (Continued)

If you plan on placing more batteries in the container at a later date, twist the poly liner to seal and screw the lid down to seal the container between uses.

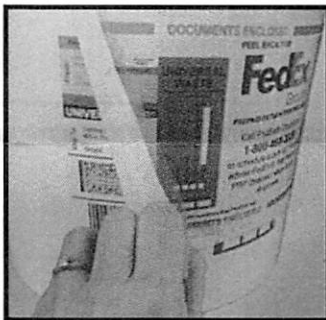


Step 2

When you are ready to return ship the full container for recycling, seal the poly liner with the enclosed zip tie, and use packing tape to ensure the liner has a complete air tight seal.

Step 3

If your recycle kit was shipped to you in a cardboard box, place the full and sealed pail back into the cardboard box. Securely tape the top flaps of the box with 2"-3" packing tape. Make sure all edges, corners, and flaps are properly sealed with tape.



Step 4

Each recycle kit comes with a prepaid return shipping label known as a "PRP" with the FEDEX® organization. **THE RECYCLE KIT MUST BE SHIPPED VIA FEDEX® GROUND ONLY!** The PRP will either be located in the instructions kit enclosed inside the recycle kit, or it will be affixed to the recycle kit itself.

Step 5

Fill in the "FROM" section with your company name and information and check the box for "Batteries." Fill in the "Accumulation Start Date" (This is the date when waste is FIRST placed in the recycle kit).

Origin Receipt 0262030 0038450	Receipt 6560390 0039450	Origin Number 0860090
FedEx's Ground Package Return Program		
From:	YOUR COMPANY NAME & ADDRESS HERE	
Turn Over for Instructions		
UNIVERSAL WASTE APPROVED		
Ship To:	RECYCLING 805 E. FRANCIS STREET ONTARIO, CA 91761	
		FedEx PRP
	201108600901394560	
		UNIVERSAL WASTE Recycling of Universal Waste
		Accumulation Start Date
		<input type="checkbox"/> Lamp(s)
		<input checked="" type="checkbox"/> Batteries
		<input type="checkbox"/> Mercury-Containing Equipment
		<input type="checkbox"/> Other
		ACCUMULATION DATE HERE

Step 6

Call FedEx® Ground at 1-800-463-3339 to schedule a pick up.

Please advise FedEx® that this is a prepaid return PRP label shipment. The PRP numbers that FedEx will ask for are the middle set of 7 digits to the right of the first digits in parenthesis. These are located under the large barcode.

Retain the "Keep for your Records" document to obtain your Certificate of Recycling.

DRY CELL BATTERY RECYCLE KIT INSTRUCTIONS

Wear safety glasses and gloves when handling material for recycle

Batteries are regulated under the Federal Universal Waste Rule 40CFR 273 and the Federal Hazardous Material Regulations 49 CFR 171-180. Basic standards under these regulations require the following: For a full understanding refer to the federal regulation. State and local municipalities may differ:

- **Start Accumulation Date:** Containers must be marked with the accumulation date of when the first battery was placed in the container. Containers must be shipped to a responsible recycler/waste company within one year of the accumulation date.
- **Lithium-ion batteries:** When shipping recyclable Lithium-ion batteries containers must be marked with the warning "LITHIUM BATTERIES FORBIDDEN FOR TRANSPORT ABOARD AIRCRAFT AND VESSEL" and must contain the enclosed "Emergency Response Guide" must be included in the container when shipping lithium-ion batteries. Because of the prevalence of lithium-ion batteries in recycle kits returned, we include the warning on the recycle kit label.
- **Insulate all Terminals:** All terminals must be fully insulated with non-conductive tape for all rechargeable lithium-ion batteries and batteries of 9 volts or higher voltage (duct tape is not acceptable).
- **Non-rechargeable Primary Lithium Batteries are not Acceptable:** Non-rechargeable Primary Lithium Batteries are not acceptable for this kit. If you need to recycle non-rechargeable primary lithium batteries including LiSO₂, LiMnO₂, and LiSo₂ (see "Batteries Prohibited below), call the number on the "Keep for Your Records" document to order a Primary Lithium Recycle Kit.

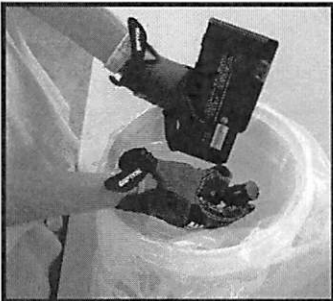
Batteries Accepted:

Alkaline / Nickel Cadmium (NiCad) / Zinc-Carbon (Zn) / Lithium-ion (Li-Ion) / Nickel-Metal Hydride (NiMH) / Mercury / Silver-Oxide

Batteries Prohibited:

Wet cell batteries / Non-rechargeable primary lithium batteries including: Lithium-Sulfur Dioxide (LiSO₂), / Lithium Manganese Dioxide (LiMnO₂) / Lithium Thionyl Chloride (LiSOCl₂) / Lithium-ion batteries containing over 5 grams of lithium per cell or 25 grams total in a battery / Broken, cracked or damaged batteries

Step 1



Inside of each pail is a poly liner, zip tie, and instruction packet. Place the poly liner in the pail before any batteries are placed in the pail. Fill in the accumulation date on label when the first battery is placed in the pail. *If you include any rechargeable lithium-ion batteries (generally found in laptops and phones), you must attach the red sticker above to the outside of the container.* *All lithium-ion batteries and all batteries of 9 volts or more must have the terminals taped with non-conductive tape (do not use duct tape).* Non-rechargeable primary lithium batteries are prohibited in this kit.

All exposed terminals must be taped with non-conductive tape for all lithium-ion batteries and batteries of 9 volts or more.