

# **QUILEUTE TRIBAL SCHOOL**

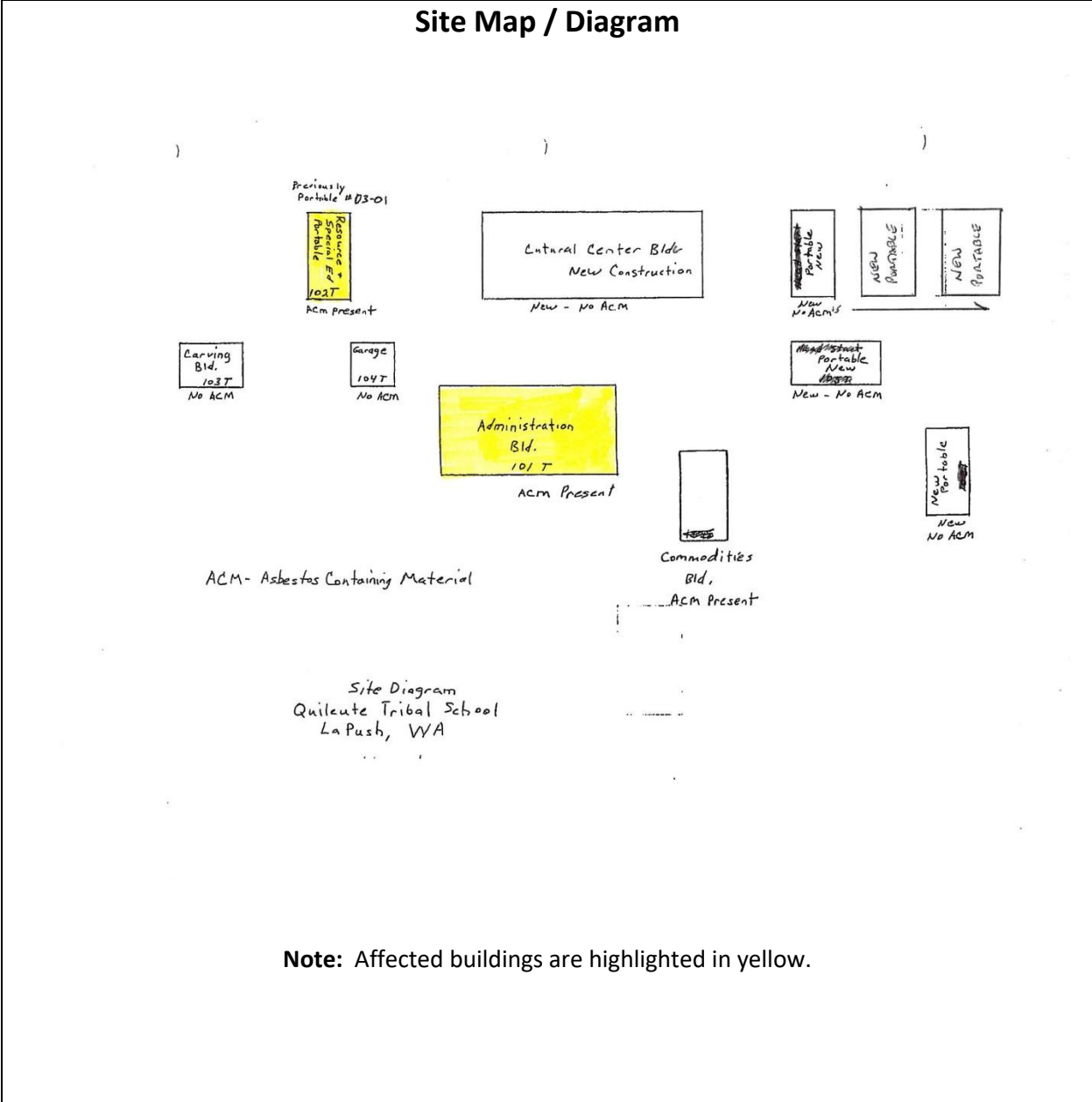


**Asbestos**

**Location Details**

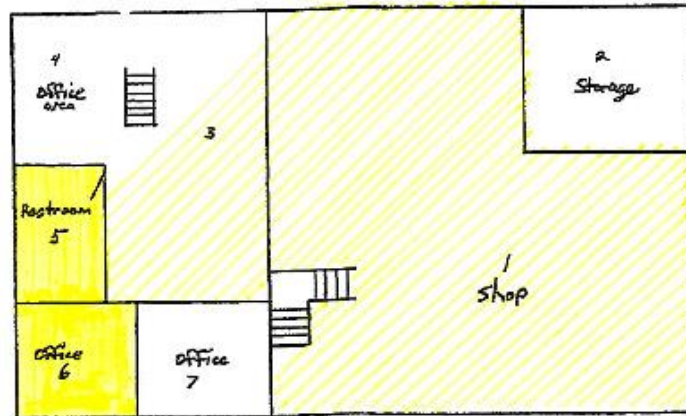
**February 28, 2017**

# TRIBAL SCHOOL ASBESTOS LOCATION DETAILS

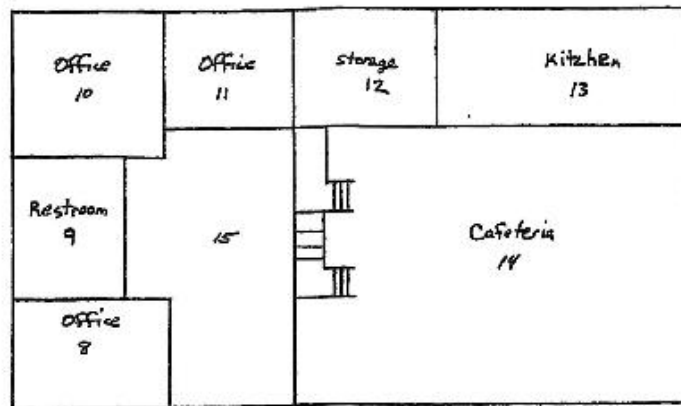


**Note:** Affected buildings are highlighted in yellow.

### TRIBAL SCHOOL ASBESTOS LOCATION DETAILS



Basement



First Floor

Administration Building

**Note:** Affected rooms are highlighted in yellow. Area of possible wiring contamination is shown with yellow cross hatch.

## TRIBAL SCHOOL ASBESTOS LOCATION DETAILS



**Old Administration Building (101T) - looking West**



**Old Administration Building (101T) - looking East**  
Testing confirmed portions of building contain asbestos.

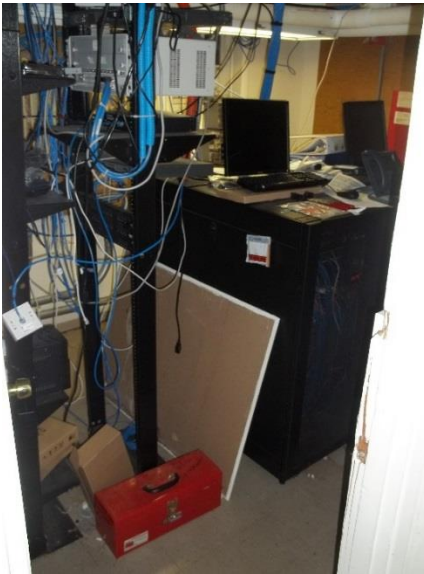


**Old Administration Building (101T) – SW Corner Basement Office 6**  
[9" floor tiles and mastic of 3% Chrysotile]



**Old Administration Building (101T) – SE Corner Basement Office 6**  
[9" floor tiles and mastic of 3% Chrysotile]

## TRIBAL SCHOOL ASBESTOS LOCATION DETAILS



**Old Administration Building (101T) –  
Basement Office 6**

View is looking SW in through the doorway  
into the phone equipment room.



**Old Administration Building (101T) – Basement  
Office 6**

View is looking at floor in through the doorway  
into the phone equipment room.  
[9" floor tiles and mastic of 3% Chrysotile]



**Old Administration Building (101T) – Old  
Basement Restroom 5**

[Area confirmed to contain asbestos in  
WAT 07-29-2016 sample.]



**Old Administration Building (101T) – Restroom  
5 Doorway Layer Detail**

[9" gray floor tiles and mastic of 2% and 4%  
Chrysotile, respectively. Yellow vinyl is non-  
asbestos containing per WAT 07-29-2016  
sample.]

## TRIBAL SCHOOL ASBESTOS LOCATION DETAILS



**Old Administration Building (101T) – Outside Restroom 5**

View is looking up at the area where WAT Sample #4 was taken – a non-asbestos wire sample.



**Old Administration Building (101T) – Shop 1**  
View is looking at assorted ceiling wiring.



**Old Administration Building (101T) – Sample of Old Basement Office Wiring on West End**  
[Area of possible asbestos containing material]



**Old Administration Building (101T) – Sample of Old Basement Office Wiring**  
[Area of possible asbestos containing material]

## TRIBAL SCHOOL ASBESTOS LOCATION DETAILS



**Old Administration Building (101T) – Sample of Old Basement Office Wiring on West End**  
[Area of possible asbestos containing material]



**Old Administration Building (101T) – Sample of Old Basement Office Wiring on East End**  
[Area of possible asbestos containing material]

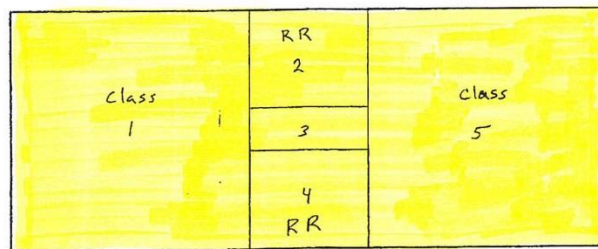


**Old Administration Building (101T) – Sample of Old Basement Office Wiring on West End**  
[Area of possible asbestos containing material. WAT 07-29-2016 sample indicated non-asbestos material for a single non-energized wire that is part of picture.]

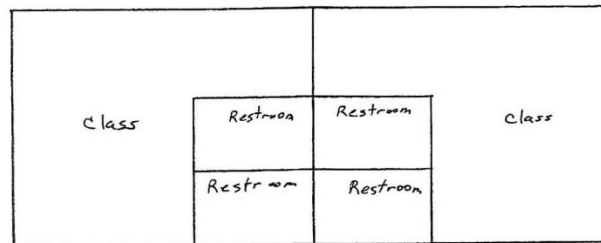


**Old Administration Building (101T) – Sample of Old Basement Office Wiring on West End**

### TRIBAL SCHOOL ASBESTOS LOCATION DETAILS



portable 03-01 102T



New Portable 108T

**Note:** Affected rooms are highlighted in yellow.



## TRIBAL SCHOOL ASBESTOS LOCATION DETAILS



**Culture Building (102T) – Picture Shows the SW Corner of the Building**



**Culture Building (102T) – Picture Shows the NW Corner of the Building**



**Culture Building (102T) – Classroom 5**  
Original floor covering has been hidden by wall-to-wall carpet.  
[Sheet vinyl flooring with 30% Chrysotile]



**Culture Building (102T) – NE Corner of Classroom 5**  
Original floor covering has been hidden by wall-to-wall carpet.  
[Sheet vinyl flooring with 30% Chrysotile]

## TRIBAL SCHOOL ASBESTOS LOCATION DETAILS



**Culture Building (102T) – Hallway to Classroom 5**

Original floor covering has been hidden by wall-to-wall carpet in classroom and hallway is original material.

[Sheet vinyl flooring with 30% Chrysotile]



**Culture Building (102T) – NW Corner of Classroom 1**

This is original floor covering.

[Sheet vinyl flooring with 30% Chrysotile]



**Culture Building (102T) – SW Corner of Classroom 1**

This is original floor covering.

[Sheet vinyl flooring with 30% Chrysotile]



**Culture Building (102T) – Exit Doorway from Classroom 1**

This is the original floor covering covered by a throw rug.

[Sheet vinyl flooring with 30% Chrysotile]

## TRIBAL SCHOOL ASBESTOS LOCATION DETAILS



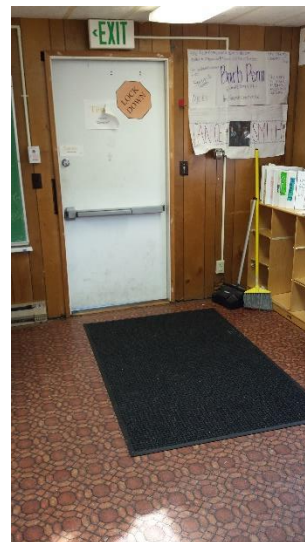
**Culture Building (102T) – SE Corner Doorway  
Detail in Classroom 1**  
Original floor covering with trim removed and  
no apparent damage.  
[Sheet vinyl flooring with 30% Chrysotile]



**Culture Building (102T) – Floor Covering  
Crack Detail in Classroom 1**  
This is original floor covering.  
[Sheet vinyl flooring with 30% Chrysotile]



**Culture Building (102T) – Floor Covering  
General Area of Crack in Classroom 1**  
This is original floor covering.  
[Sheet vinyl flooring with 30% Chrysotile]



**Culture Building (102T) – Exit Doorway from  
Classroom 1 with Rubber Floor Mat  
Covering Damaged Floor**  
[Sheet vinyl flooring with 30% Chrysotile]

## TRIBAL SCHOOL ASBESTOS LOCATION DETAILS



**Culture Building (102T) – N end of Building, Exterior Roof Decking on Portable  
(now covered by second metal roof)**

Original roof covering with some obvious damage – Covered/enclosed by second roof.  
[Black asphaltic roofing material with 4% Chrysotile. Material confirmed to contain asbestos  
in WAT 02-27-2017 sample. ]



**Culture Building (102T) – Floor Covering Showing Expansion of Crack in Classroom 1**

This is original floor covering and the picture was taken on January 30, 2017.

[Sheet vinyl flooring with 30% Chrysotile]